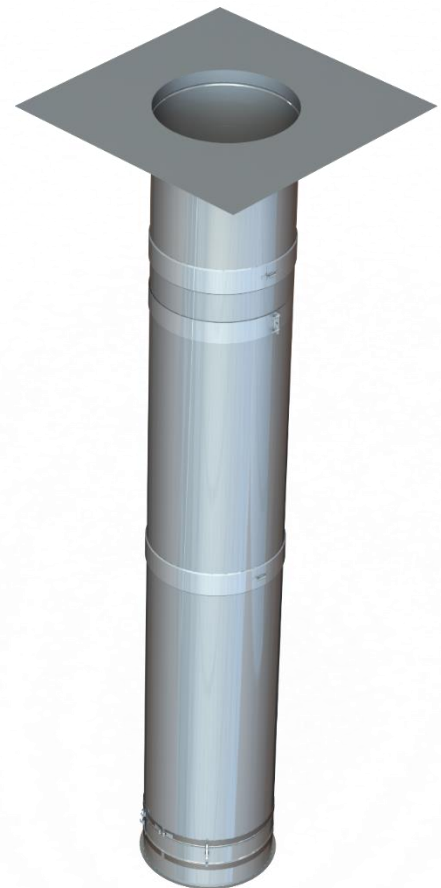


Grease Duct Spec

Model:

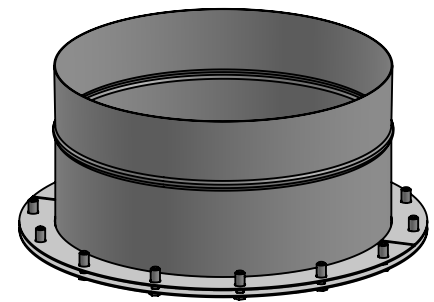
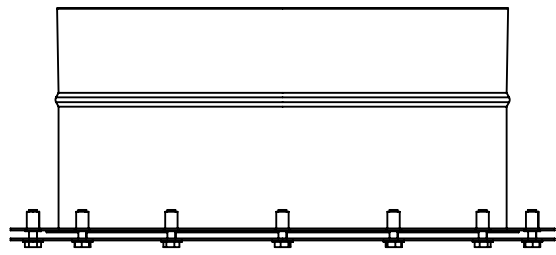
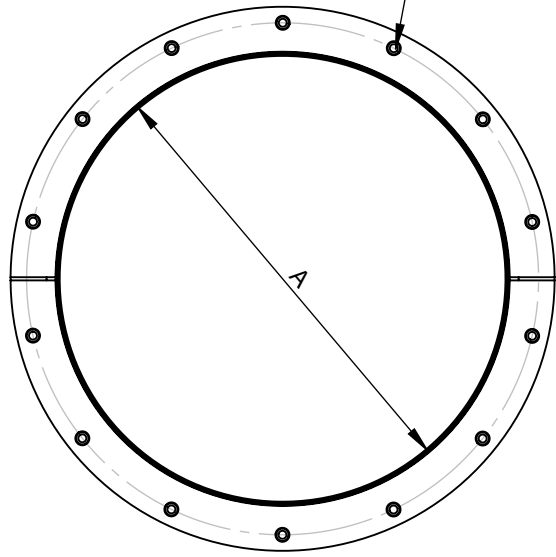
SW-NAKS-KIT001

Single Wall Conical 10" Vertical





1 2 3 4

1/4" X 1" BOLTS

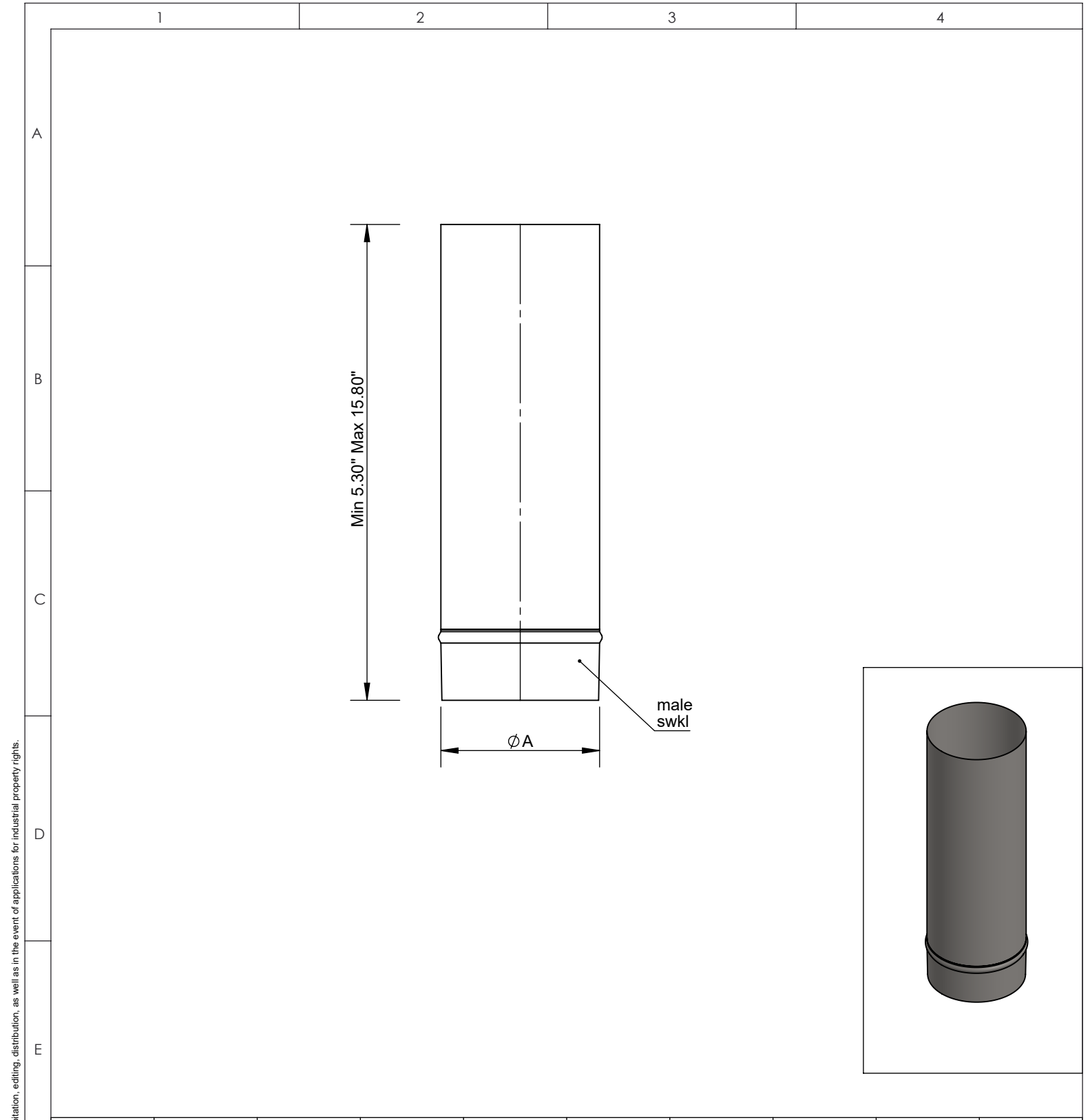


A
B
C
D
E



Ø	10	11	12	13	14	16	18	20	22
A	10	11	12	13	14	16	18	20	22

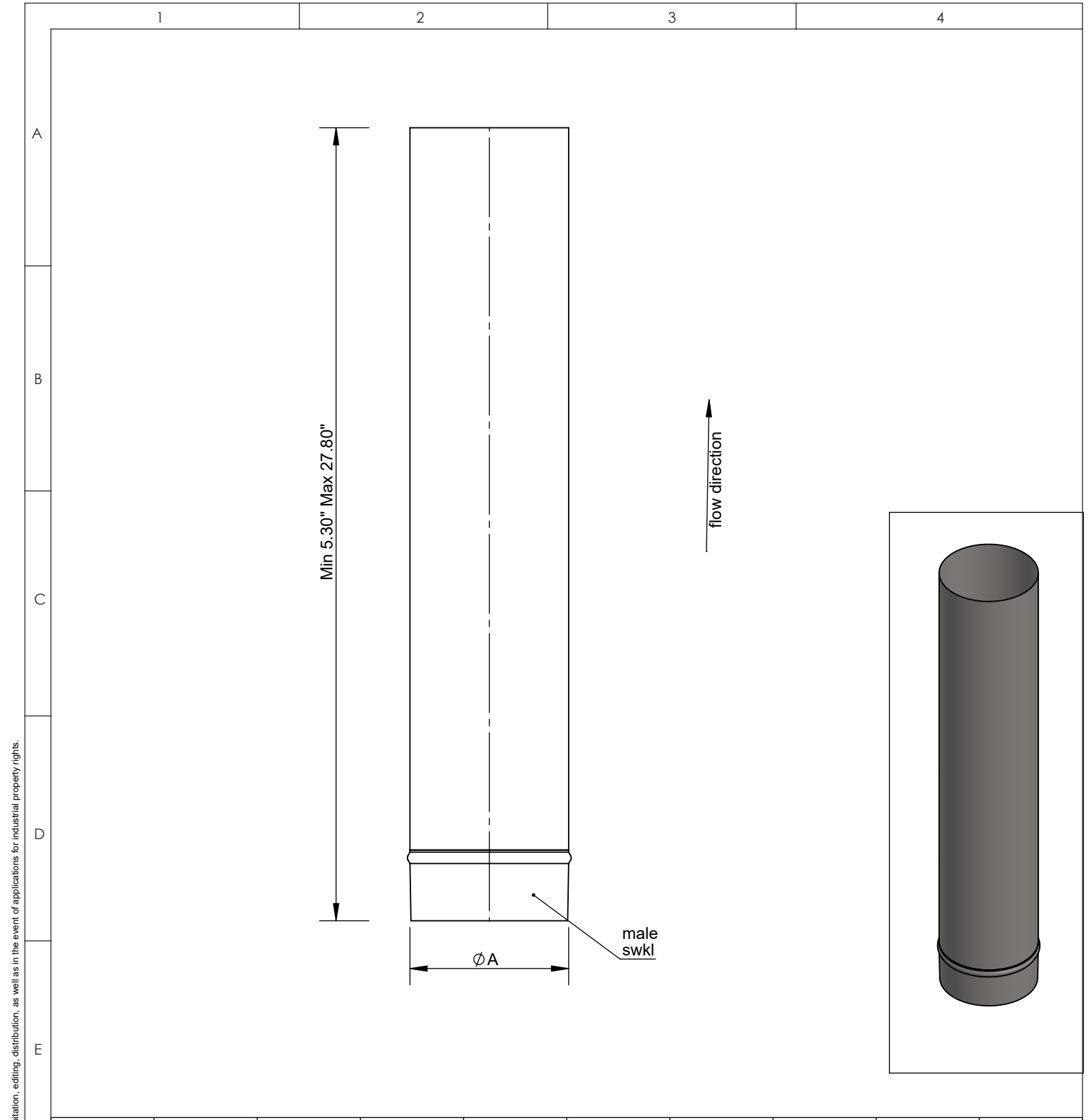
F	material: inside/outside	304	surface: inside/outside	BA	inch / lb		 NORTH AMERICAN KITCHEN SOLUTIONS INCORPORATED	scale			
	revisions-no.				date	name		description No Weld Hood Adapter	format US LETTER		
	drawn by								code SWNAKSØ-NWHA	sheet	
	checked by									drawing no.	
	approved by										
modified by											

© NAKS Inc. All rights reserved, also regarding any disposal, exploitation, editing, distribution, as well as in the event of applications for industrial property rights.





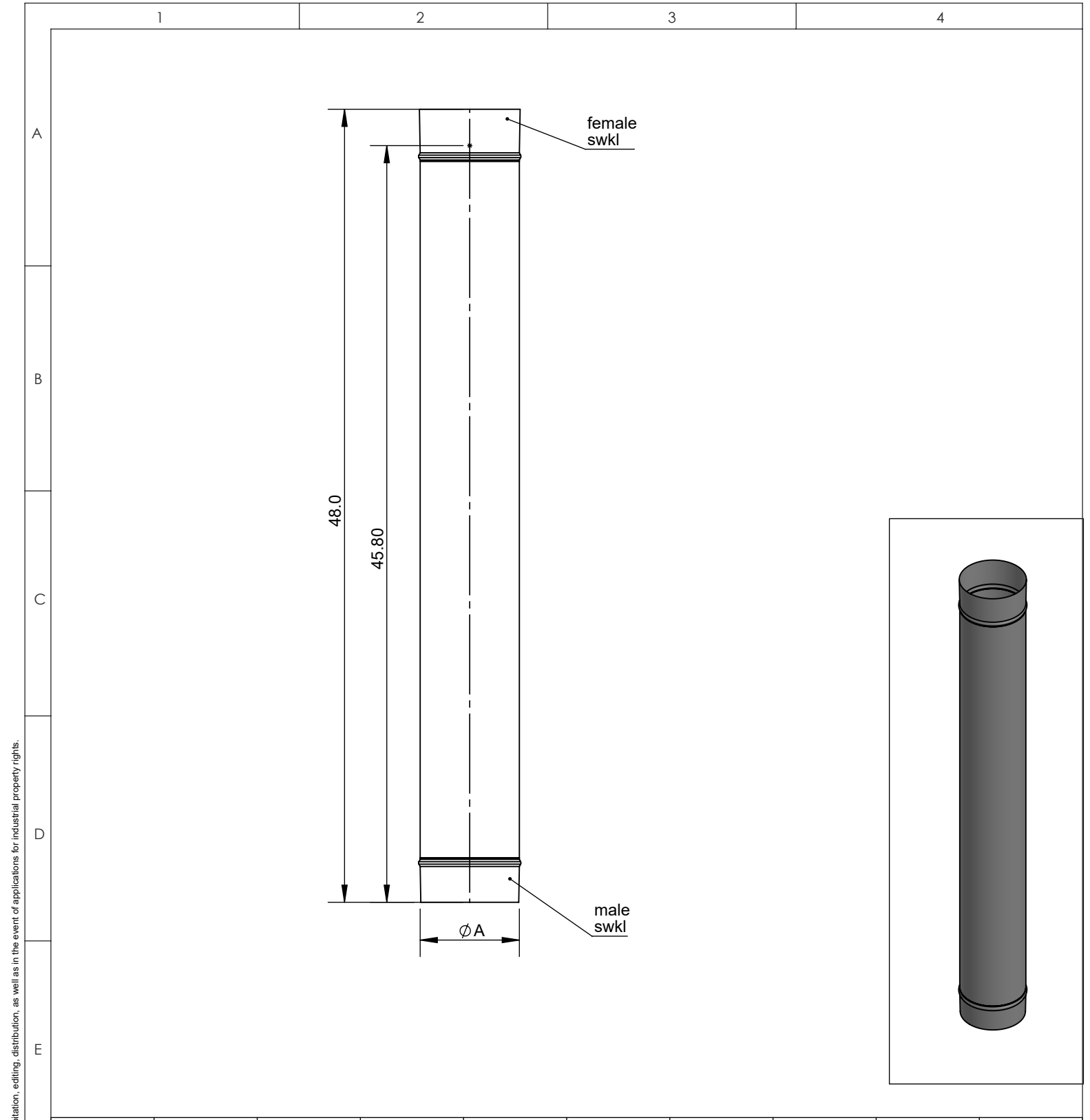
© NAKS Inc. All rights reserved, also regarding any disposal, exploitation, editing, distribution, as well as in the event of applications for industrial property rights.

	Ø	10	11	12	13	14	16	18	20	22			
	A	10	11	12	13	14	16	18	20	22			
F	material: inside/outside	304		surface: inside/outside	BA		inch / lb				scale		
				revisions-no.		 NORTH AMERICAN KITCHEN SOLUTIONS INCORPORATED				format			
				date	name					description			
				drawn by			code				sheet		
				checked by							SWNAKSØ-18CL		
			approved by			drawing no.							
			modified by										



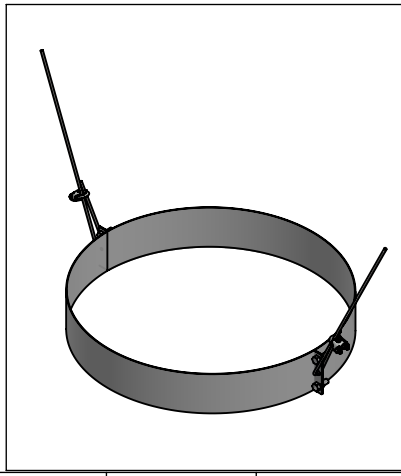
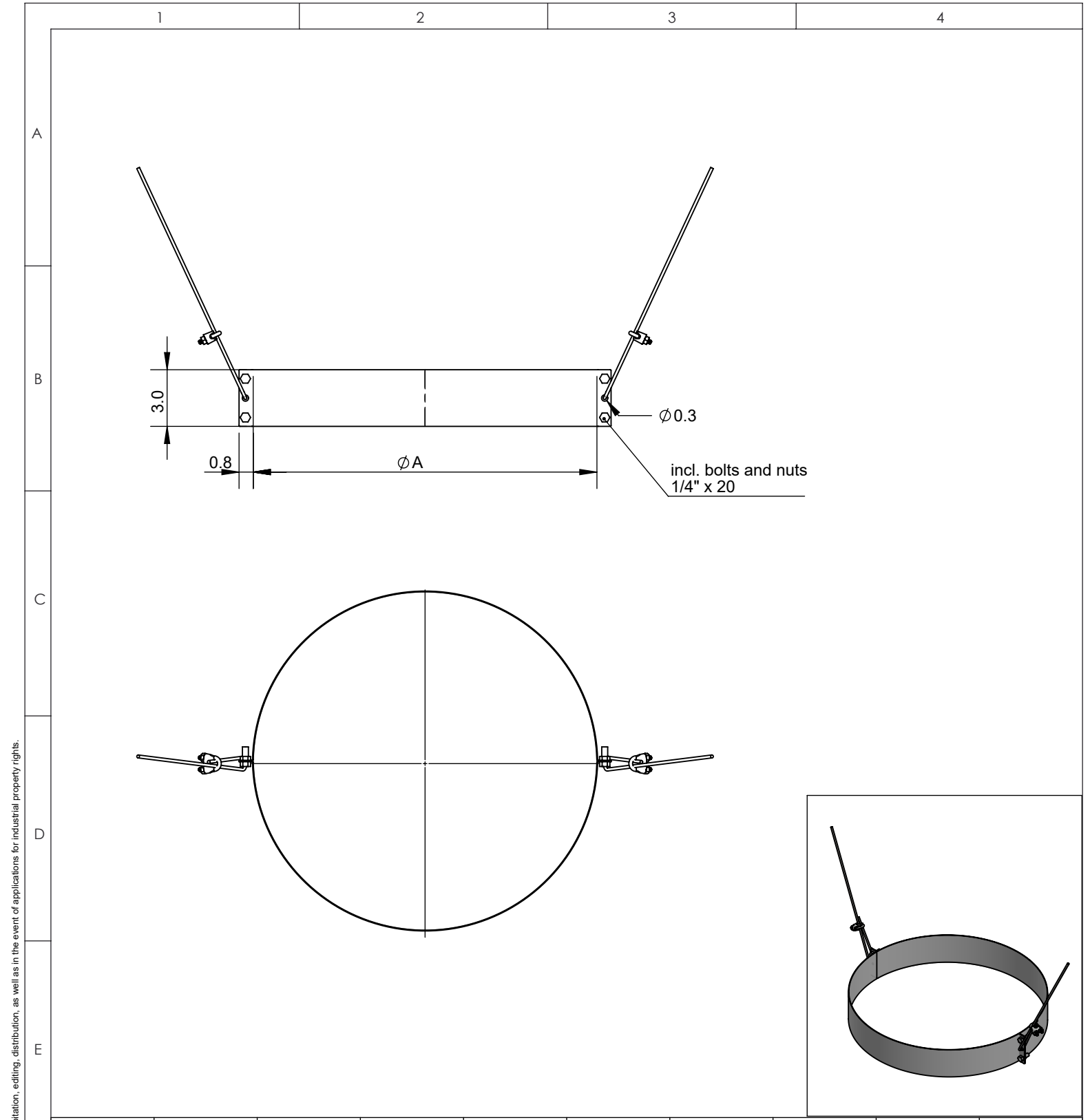
© NAKS Inc. All rights reserved, also regarding any disposal, exploitation, editing, distribution, as well as in the event of applications for industrial property rights.

	Ø	10	11	12	13	14	16	18	20	22	
	A	10	11	12	13	14	16	18	20	22	
F	material: inside/outside		surface: inside/outside		inch / lb		 NORTH AMERICAN KITCHEN SOLUTIONS INCORPORATED				scale
	304		BA		revisions-no.						description
			date	name						sheet	
			drawn by							code	SWNAKSØ-30CL
			checked by							drawing no.	
		approved by									
		modified by									





© NAKS Inc. All rights reserved, also regarding any disposal, exploitation, editing, distribution, as well as in the event of applications for industrial property rights.

	Ø	10	11	12	13	14	16	18	20	22	
	A	10	11	12	13	14	16	18	20	22	
F	material: inside/outside		surface: inside/outside		inch / lb		NORTH AMERICAN KITCHEN SOLUTIONS <small>INCORPORATED</small>				scale
	304	BA	revisions-no.		description						format
			date	name	48" Fixed Length				sheet		
			drawn by		code						
			checked by		SWNAKSØ-48L						
		approved by		drawing no.							
		modified by									

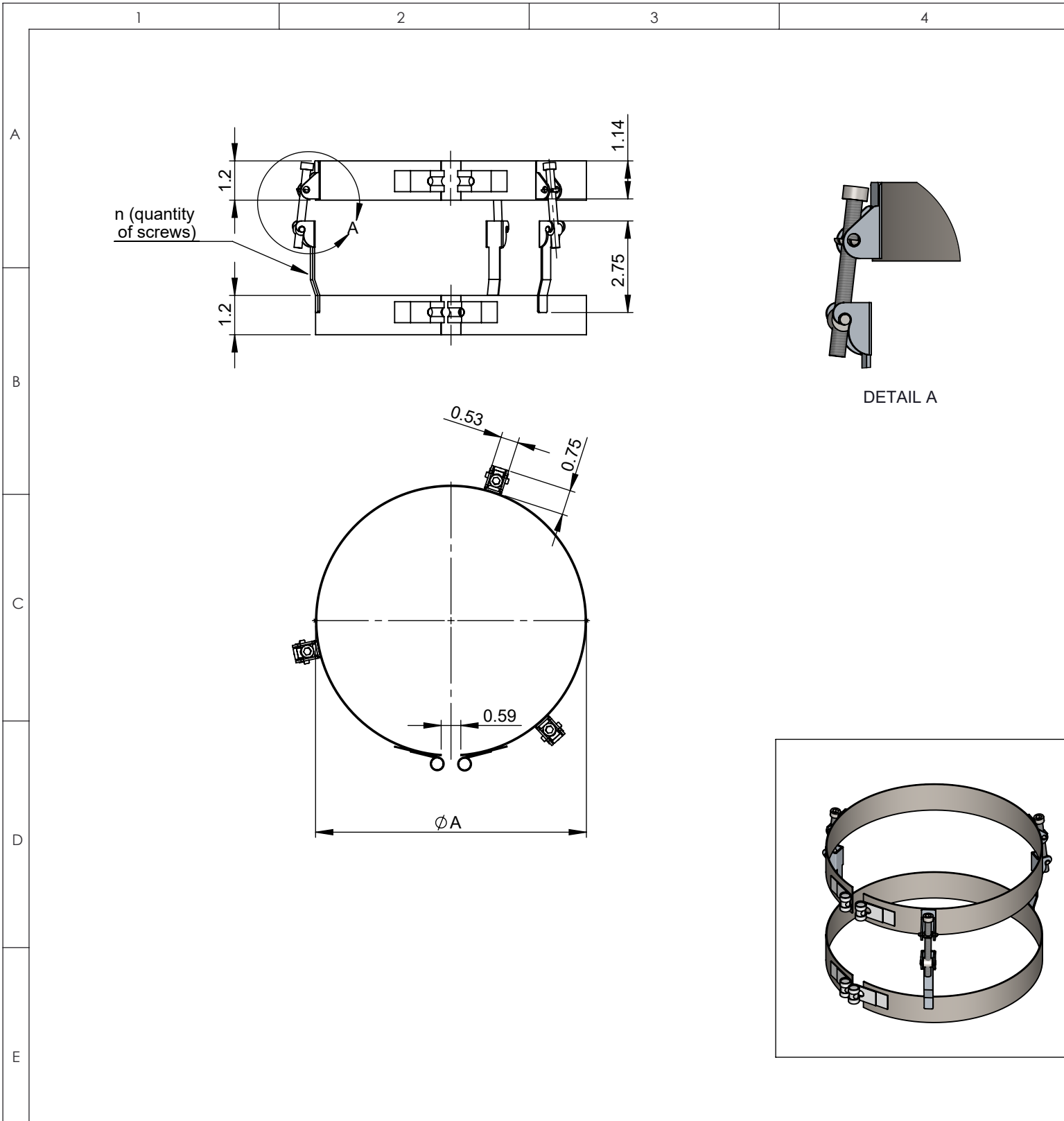




Ø	10	11	12	13	14	16	18	20	22
A	10	11	12	13	14	16	18	20	22

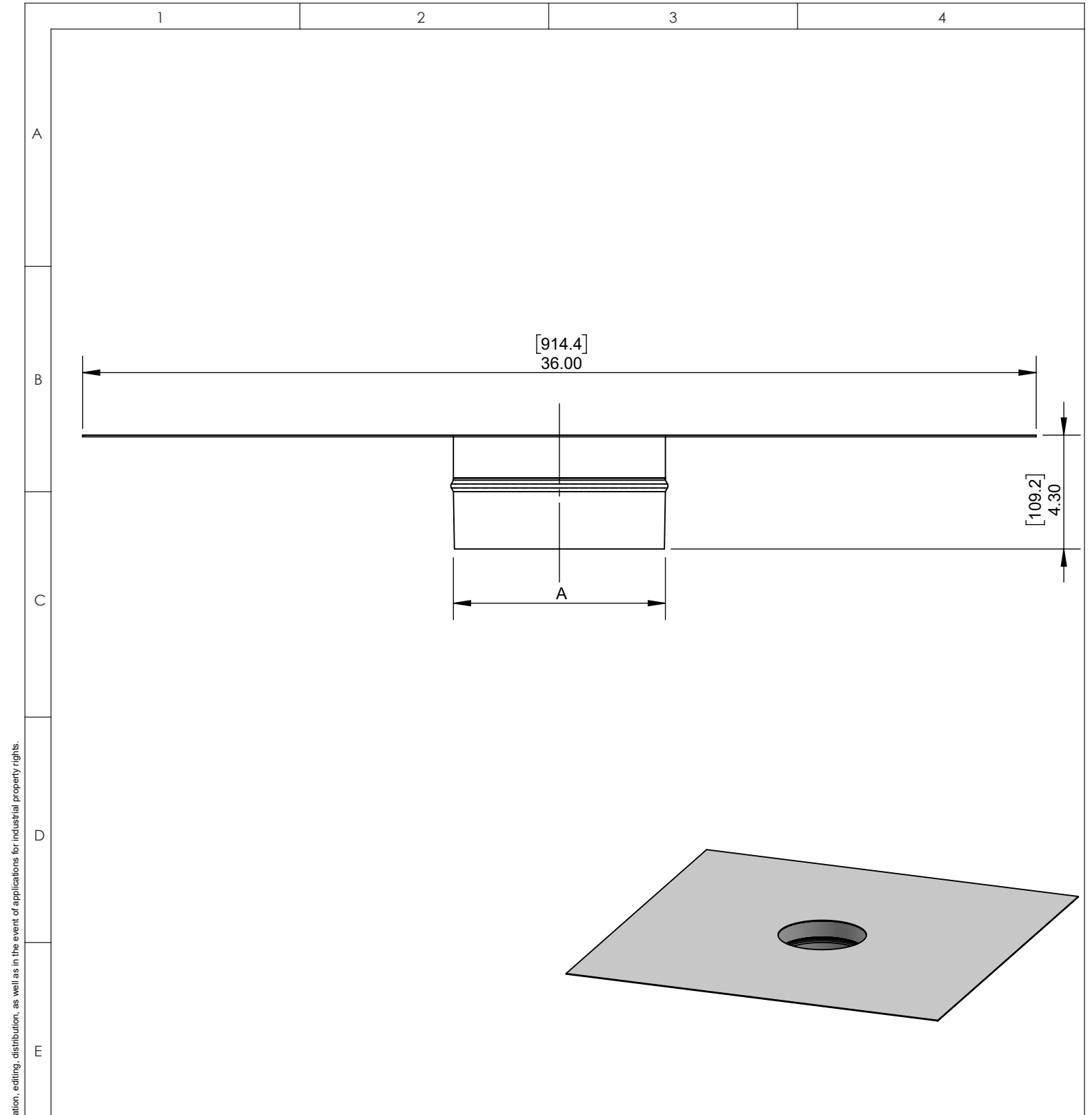
material: inside/outside	304	surface: inside/outside	BA	inch / lb		 NORTH AMERICAN KITCHEN SOLUTIONS INCORPORATED	scale	
				revisions-no.			description Light Support Band	format US LETTER
				date	name			sheet
				drawn by				
				checked by				
approved by		code SWNAKSØ-LSB						
modified by		drawing no.						

© NAKS Inc. All rights reserved, also regarding any disposal, exploitation, editing, distribution, as well as in the event of applications for industrial property rights.


© NAKS Inc. All rights reserved, also regarding any disposal, exploitation, editing, distribution, as well as in the event of applications for industrial property rights.



\emptyset	10	11	12	13	14	16	18	20	22	
A	10	11	12	13	14	16	18	20	22	
material: inside/outside	304		surface: inside/outside	BA		inch / lb				scale
				revisions-no.				 NORTH AMERICAN KITCHEN SOLUTIONS INCORPORATED	format	
				A		description				US LETTER
				date	name	KL Clamp				sheet
				drawn by						
				checked by						
				approved by						
				modified by		code				
						SWNAKSØ-KLC				
						drawing no.				



© NAKS Inc. All rights reserved, also regarding any disposal, exploitation, editing, distribution, as well as in the event of applications for industrial property rights.

	Ø	10	11	12	13	14	16	18	20	22	
	A	10	11	12	13	14	16	18	20	22	
F	material: inside/outside	304		surface: inside/outside	BA		inch / lb				scale
					revisions-no.				 NORTH AMERICAN KITCHEN SOLUTIONS INCORPORATED	format	
					date	name		description		US LETTER	
					drawn by					Fan Plate Adapter - End 36"x36"	sheet
					checked by						code
				approved by			SWNAKSØ-FPE:36x36				
				modified by			drawing no.	